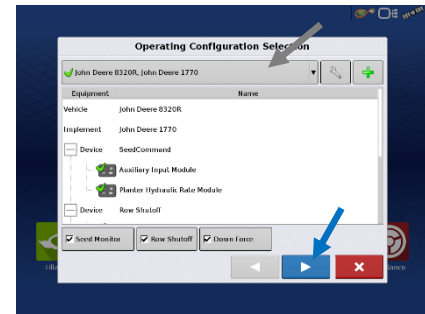


STARTING A FIELD OPERATION

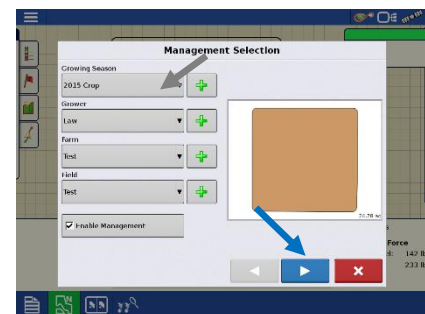
1. From the Home Screen press the **Tile** corresponding with the operation you want to complete.



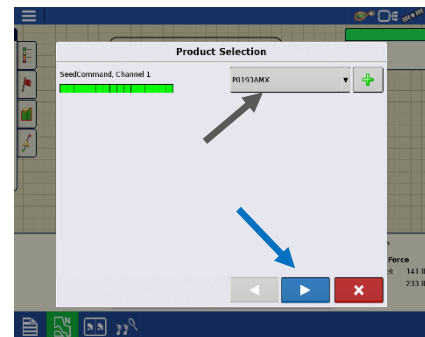
2. Choose the on screen configuration that matches your current equipment configuration using the **drop down menu**. Press the **blue right arrow** to continue.



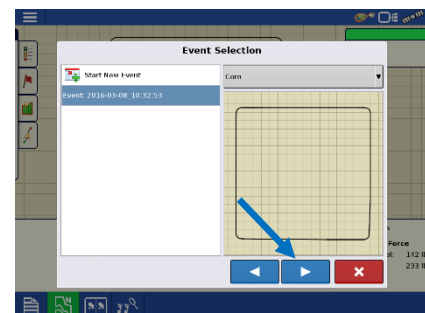
3. Choose your field from the **drop down menus**, or press the **green plus** to add a new name. Press the **blue right arrow** to continue.



1. Choose your product or press the **green plus** to add a new product. Press the **blue right arrow** to continue.

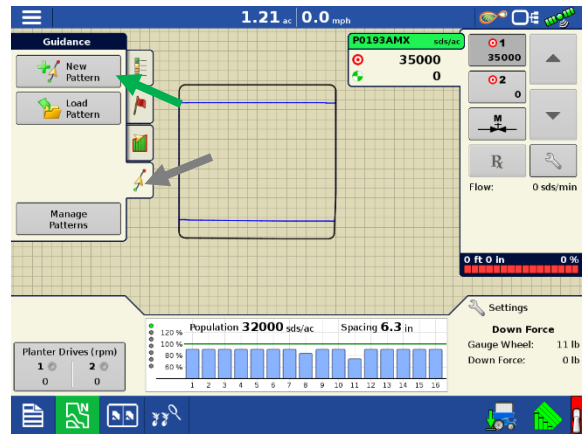


4. Start new event or continue a previous by highlighting either option. Press the **blue right arrow** to continue. Press the **Green Checkmark** to accept.

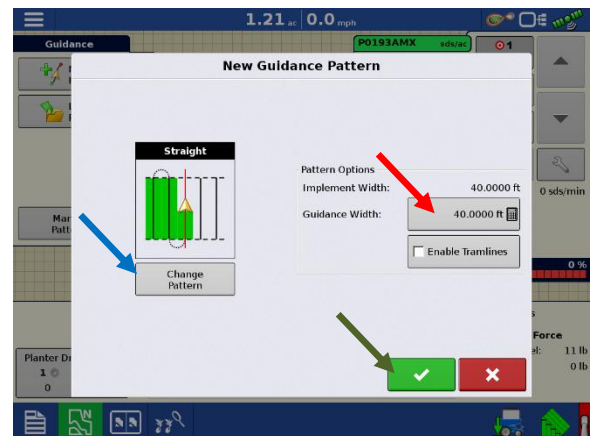


Setting A Guidance Line

1. From the Run Screen press the *bottom tab* on the left menu. Then press *New Pattern*.



2. Using the *Change Pattern Button*, select the desired guidance pattern. Double check that the proper *Guidance Width* is entered on the right (changes can be made by pressing the *Calculator Button*). Press the *Green Checkmark* to accept your selections.



3. Press the *A-B Button* to set your *A Point*, drive the desired distance and press the *A-B Button* again to set the *B Point*. If using an *A+ Degree Heading*, press the middle button with the gold arrow to use the tractor's heading or you can enter a known heading using the *Calculator Button*.

